





A single staff of music with a common time signature 'C'. The notation consists of four measures separated by bar lines. The first measure contains two quarter notes. The second measure contains a beamed eighth-note triplet followed by a quarter note and a quarter rest. The third measure contains a dotted quarter note followed by an eighth note and a quarter rest. The fourth measure contains a quarter note followed by a quarter rest and another quarter note followed by a quarter rest. The piece ends with a double bar line.



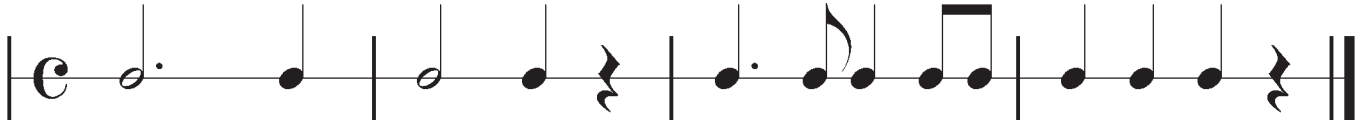
A single musical staff with a common time signature (C). The notation consists of four measures separated by vertical bar lines. The first measure contains a half note on the first line, followed by a quarter note on the second line, and a quarter note on the second space. The second measure contains a quarter note on the second space, a quarter note on the second line, and a quarter note on the second space. The third measure contains a whole note on the first line. The fourth measure contains a dotted quarter note on the second space, an eighth note on the second line, and a quarter note on the second space. The piece ends with a double bar line.



A single musical staff with a common time signature (C). The notation consists of four measures separated by vertical bar lines. The first measure contains a quarter rest, followed by an eighth note, a beamed eighth note, a quarter note, and a quarter rest. The second measure contains a dotted quarter note, an eighth note, a quarter note, and a quarter rest. The third measure contains a beamed eighth note, a beamed eighth note, a beamed eighth note, a beamed eighth note, and a half note. The fourth measure contains a whole note. The staff ends with a double bar line.



A single musical staff with a common time signature (C). The notation consists of four measures separated by vertical bar lines. The first measure contains a half note followed by a quarter note. The second measure contains a dotted quarter note, an eighth note, and a quarter note. The third measure contains a beamed eighth-note pair, a quarter note, and a quarter note. The fourth measure contains a half note followed by a quarter rest. The staff ends with a double bar line.







A single musical staff with a common time signature (C). The notation consists of four measures separated by vertical bar lines. The first measure contains a half note followed by a quarter note. The second measure contains a quarter note, an eighth note pair, and a quarter note, followed by a fermata. The third measure contains a whole note followed by a fermata. The fourth measure contains a quarter note, an eighth note pair, and a quarter note, followed by a fermata. The piece ends with a double bar line.